



FRANKE TOBEY JONES

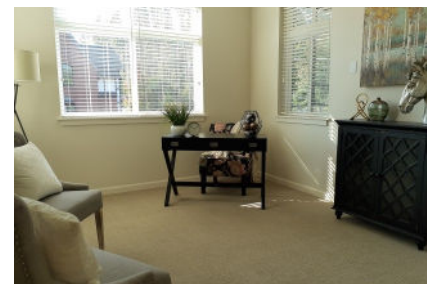
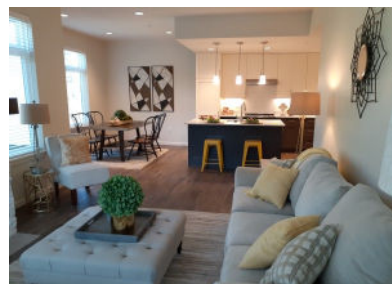
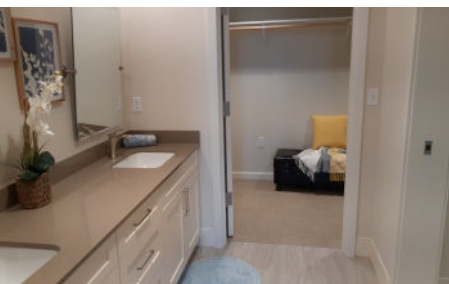
Enjoy your age

NEW—BRISTOL VIEW APTS

Independent Living



Our 16 apartments, all two bedroom/two bathroom, some with views of Puget Sound and Mount Rainier, have all the conveniences and security of being in a well-planned community. Bristol View Apartment residents receive all the benefits of Franke Tobey Jones residency. Enjoy a private life or a social one, home cooking or restaurant-style dining—it's your choice. We'll handle all of the home and yard maintenance and watch your home when you're away. Truly maintenance free inside and out.



BRISTOL VIEW APARTMENT AMENITIES, SQ. FT. AND PRICING

AMENITIES

- ◆ 6,000 square foot fitness center with full-time fitness staff and a variety of fitness classes including Yoga, Tai Chi, Aerobics, Ballroom Dancing and more
- ◆ Senior University with interesting and thought provoking programs and classes
- ◆ Engaging activity calendar including cultural events, trips and tours
- ◆ Bistro Café, Resident Store, Dining rooms within walking distance.
- ◆ Salon/Spa services for men and women
- ◆ Raised bed resident garden and greenhouse
- ◆ Guest house for family and friends
- ◆ Hobby and craft room, woodshop
- ◆ Beautiful private secure location on 20 acres with walking paths and water views
- ◆ Priority status to move throughout campus if needs change

BECOME A RESIDENT

To secure residency at FTJ place yourself on our Priority List by submitting an application and a fee of \$750 per person.

FEES

Entrance Fee*:	\$195,000 to \$250,000
Monthly Fee range:	\$4,975 to \$5,410
Square Footage range:	1,306 to 1,575

Pet fee: \$500 non-refundable pet deposit will be collected upon move-in and appropriate rules will apply.

*The entrance fee is due upon occupancy. If the apartment is occupied less than five years, a prorated percentage of the entrance fee will be refunded to you. The entrance fee allows you to use your assets to secure a manageable monthly expense for your residency in the apartment.

ALL APARTMENTS INCLUDE

- ◆ Spacious, open living room with private balcony
- ◆ Private master suites with dual sinks and walk-in closet; some with balcony access
- ◆ Gourmet Kitchen—fully equipped with pull out shelves
- ◆ Gas fireplace
- ◆ Full size washer and dryer
- ◆ High-end finishes
- ◆ Secure underground parking (one space per apartment) with extra storage
- ◆ Housekeeping twice monthly

ADDITIONAL PERKS INCLUDE

- ◆ Small pets allowed
- ◆ Fitness center and personal trainers upon request
- ◆ Transportation
- ◆ Emergency services monitored for fire/ burglary
- ◆ 3 days health care benefit per year per apartment (15 days max.)
- ◆ Lots of social activities
- ◆ Outdoor patio with BBQ and fire pit
- ◆ Electric car charger available for a fee

ALSO INCLUDED

- ◆ Water, sewer, garbage
- ◆ Cable television
- ◆ Property Taxes
- ◆ Building Insurance
- ◆ Maintenance of all ground and common areas
- ◆ Maintenance of exterior of home
- ◆ Heating, ventilation, plumbing, electrical
- ◆ Transportation

Meals are optional but can be arranged for a fee.

For complete details, please call Michelle Olafson or Shirley Robbins—Resident Accommodations at 253-752-6621 or Michelle at 253-377-3262 or visit www.franketobeyjones.com/bristolview