

2024 Prices ~ Care Center

Memory Care



Our private pay memory care provides 41 private suites with en-suite bathroom, and 8 private suites, each suite with a shared bathroom. This is a specialized community with 24-hour/day guided care for seniors with Alzheimer’s Disease and dementia. Our goals are: to provide a sense of security and belonging through reassuring staff in a place that feels like home, and to add quality of life through a daily routine of building conversation, social interaction, bonding and a sense of belonging.

Private suite with shared bath:

\$5,780 per month—Rooms #8, 9, 16, 17, 23, 24, 25, 26

Private suite with private bath:

\$6,685 per month

Rooms #11, 12, 13, 14, 18, 19, 28, 29, 30, 32, 33, 35, 36, 38, 39, 48, 49

\$7,595 per month

Rooms #2, 3, 4, 5, 6, 7, 10, 15, 20, 21, 22, 27, 31, 34, 37

\$7,755 per month

Rooms #40, 41, 42, 43, 44, 45, 46, 47

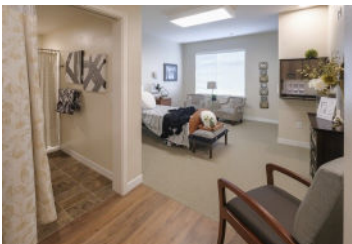
\$9,885 per month—Room #1

Memory Care Level of Care Services:

Level 1 \$2,380/month
 Level 2 \$3,365/month
 Level 3 \$4,680/month

See “Memory Care Level of Care Assessment Tool” for more information.

Skilled Nursing



Our private pay long-term licensed skilled nursing offers excellent care with a 24-hour staff of RNs, LPNs and Certified Nursing Assistants in a friendly, active, peaceful and beautiful environment. We also provide many amenities and care services. The 19 private suites each have a full en-suite bathroom; plus there are two sets of private suites each with a shared bathroom. Residents enjoy chef prepared meals in a lovely dining room as well as many events and programs. Personal laundry included.

Private suite with shared bath:

\$460 per day—Rooms #4, 5, 12, 13

Private suite with private baths:

\$492 per day

Rooms #1, 2, 8, 9, 10, 11, 22, 23

\$524 per day

Rooms #3, 6, 7, 14, 15, 16, 17, 18, 19, 20, 21

Skilled Nursing and Memory Care rates are based on square footage, views and location.

Skilled Nursing Additional Fees:

Pharmaceuticals, medical and incontinence supplies.

Residents have the opportunity to obtain medical, vision, dental and foot care services on site.

The Salon and Spa staff pick up and drop off residents for their favorite hairstyle or manicure/pedicure.

Note: FTJ does not have a contract with Medicare or Medicaid.

FRANKE TOBEY JONES



2024 Prices Independent Living

Tobey Jones Building



	Prices Start At	Sq Ft Start At
Studio	\$4,295 / month	390 sq. ft.
One Bedroom	\$4,215 / month	375 sq. ft.
Large One Bedroom	\$6,135 / month	625 sq. ft.
Two Bedroom	\$7,260 / month	840 sq. ft.
Second Person	\$1,000/ month	
* No Entrance Fee		

The Tobey Jones Building offers apartment living in a comfortable, secure and convenient atmosphere. Residents receive three chef-prepared meals daily in a well-appointed dining room with waited service, weekly housekeeping and transportation if needed. This historic building was built in 1924 and has been beautifully updated and restored with spacious one and two bedroom apartments, some featuring gorgeous mountain and Puget Sound views. This is truly carefree retirement living.

Garden Apartments



Size (approx)	Monthly Fee	Entrance Fee
585—665 sq. ft.	\$3,645—\$4,885	\$ 55,000
925—940 sq. ft.	\$5,650—\$6,165	\$ 85,000
915—1,270 sq. ft.	\$5,350—\$7,105	\$ 100,000

Skilled Nursing benefit: two days per year per apartment for a maximum of 10 days.

One, two and two bedroom plus den apartments have well-appointed layouts. The building’s community spaces, soaring ceilings, grand staircase, elevator, library, sunroom and lounge plus on-site Concierge are a delight to all residents. Enjoy continental breakfast Mondays, Wednesdays and Fridays; weekly happy hour; twice monthly housekeeping; transportation and more are all included. This well appointed building offers a maintenance-free lifestyle, and provides you all the conveniences, security and support for an active senior lifestyle.

Independent Living pricing continued next page

2024 Prices ~ Independent Living

Bristol View Apartments



Monthly Fee range: \$5,895 to \$6,415
 Square Footage range: 1,300 to 1,575
 Entrance Fee: \$245,000 to \$300,000

Skilled Nursing benefit: three days per year per apartment for a maximum of 15 days.

16 spacious, one-level apartments, all have two bedrooms and two bathrooms. Some apartments have views of Puget Sound and Mount Rainier, others enjoy a beautiful campus view. Features include secure under building parking, open floor plans, gourmet kitchen with beautiful wood cabinetry and quartz countertops, gas fireplace, full size washer and dryer, oversized walk-in closet in the master bedroom, maintenance-free living and more.

Duplex Cottages



Monthly Fee: \$4,895
 Square Footage: 1,340 plus a 375 sq. ft. garage
 Entrance Fee: \$225,000

Enjoy a spacious, single-level home in a lovely, manicured neighborhood with all the conveniences and security of being in a well-planned retirement community. Our beautifully designed duplex cottages have two bedrooms, two bathrooms, kitchen and fireplace with a well-appointed layout. Each duplex cottage provides maintenance-free living, and all the amenities that active seniors are looking for in retirement living.

INDEPENDENT LIVING ENTRANCE FEES:

The entrance fee is due upon occupancy. If the apartment is occupied less than five years, a prorated percentage of the entrance fee will be refunded to you. The entrance fee allows you to use your assets to secure a manageable monthly expense for your residency in the apartment.

All areas of Campus:

PET FEE:

\$1,000 non-refundable pet deposit will be collected upon move-in and appropriate rules will apply.

PIORITY WAIT LIST:

To join our Priority Wait List, we welcome you to submit a completed application and fee of \$1,000 per person.

2024 Prices ~ Assisted Living

Lillian Pratt Building



Residents retire in style and comfort in the totally “refreshed” Lillian Pratt building. Lovely studios, one and two bedroom apartments, ranging in size from 270 to 1,340 square feet, are available with access to care and an emergency call system. Meals, housekeeping and transportation are also included. All enjoy an extensive and engaging activity schedule centrally located in the building for easy access, complete with cultural, educational and social programming.

Prices start out with monthly rent below plus Level of Care fee (no entrance fee):

	Price Range
Studio	\$4,040—\$ 5,510/month
One Bedroom	\$6,035—\$ 6,865/month
Large One Bedroom	\$6,885—\$ 8,755/month
Two Bedroom	\$10,045—\$10,235/month
Second Person	\$1,000/month

These fees include room and board, 24-hour access to nursing services and personal care aides, all activity programming and social services as needed. If FTJ does your laundry, monthly laundry charges are based on weight.

Assisted Living Level of Care Fee:

Level	Points	Monthly Fee
1	0-4	\$ 475
2	5-14	\$1,160
3	15-29	\$2,040
4	30-45	\$2,740
5	46-75	\$3,750

76 points or above prompts discussion of resident’s needs and further options (skilled nursing).

See “Assisted Living Level of Care Assessment Tool” for more information.

